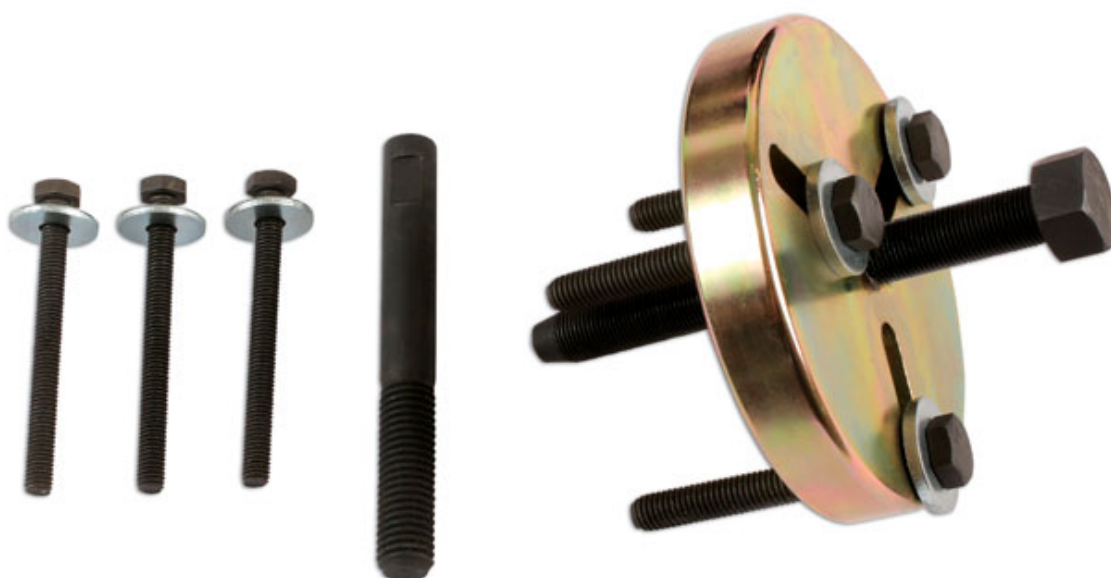


## Crankshaft Pulley Puller Set - for MINI

Puller set, specially designed with slotted mounting holes to allow it to fit both types of pulley found on the W11 engine codes.



### Additional Information

- Suitable for all 1.6 Mini One, Cooper & Cooper S.
- Applications: W11 engines in R50, R52 & R53 chassis.
- Equivalent to OEM 11 8 450 and 11 8 441.
- Supplied with thrust piece (OEM 11 8 270) to protect the crankshaft nose.
- IMPORTANT: ensure the threaded bar is well lubricated with molybdenum disulphide grease before use.

<http://lasertools.co.uk/product/6142>

